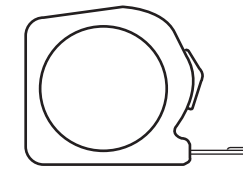


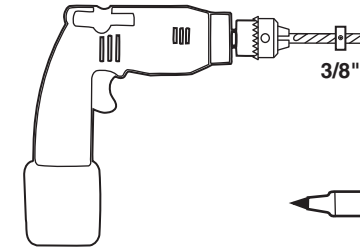
INSTALLATION INSTRUCTIONS – KIT, HOOD DEFLECTOR

Thank you for purchasing a LUND accessory designed, engineered and built specifically for your vehicle. We have made every effort to ensure that this hood deflector is top quality in terms of fit, durability, finish and ease of installation.

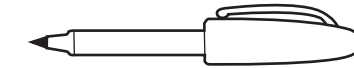
TOOLS REQUIRED



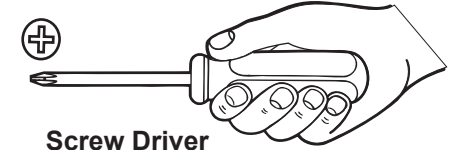
Tape Measure



3/8"



Pen

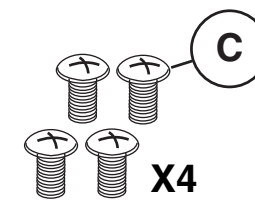


Screw Driver

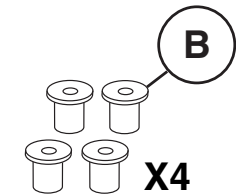
KIT CONTENTS



A



X4
Machine Screw

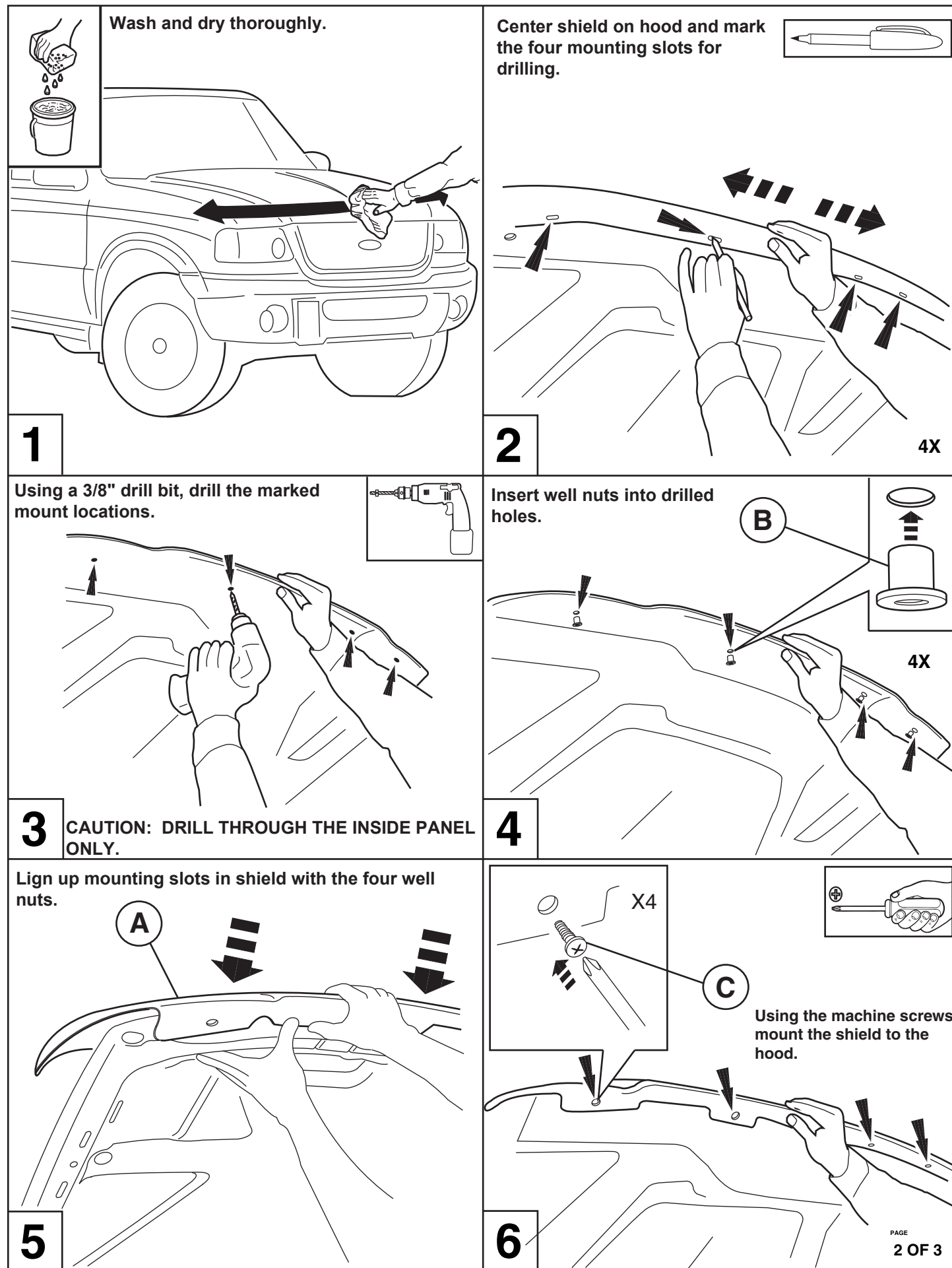


X4
Well Nut

CARE & CLEANING

1. AVOID THE USE OF AUTOMATIC "BRUSH-STYLE" CAR WASHES
2. DO NOT USE CLEANING SOLVENTS OF ANY KIND
3. WASH ONLY WITH MILD SOAP & DRY WITH A CLEAN CLOTH
4. DO NOT PULL ON SHIELD TO CLOSE HOOD

COLOR PAINTING INSTRUCTIONS ON PAGE 3 OF INSTRUCTION SHEET



Painting Lexan and Acrylic Bug Shields

READ ALL INSTRUCTIONS CAREFULLY AND COMPLETELY BEFORE STARTING PROCEDURE. CHECK FIT BEFORE PAINTING. LUND WILL NOT WARRANT PAINTING COSTS ON MISFITTING SHIELDS.

Preparation

DO NOT USE SOLVENT CLEANERS OF ANY KIND TO CLEAN THE SHIELD. THIS WILL DAMAGE THE SHIELD. When preparing the shield for painting, be sure to work on a soft clean surface to ensure the shield will not be scratched.

- 1) The shield needs to be washed thoroughly using a mild liquid dish soap (without grit) and a soft cotton cloth.
- 2) Rinse all traces of soap off with clean water.
- 3) Dry with a soft clean cotton cloth.

Caution: DO NOT leave any water or soap streaks on the inside of the shield.

- 4) Mask off the outside face of the shield with masking tape.
 - 5) Trim the tape flush with the outer edge of the shield.
 - 6) Clean out the inside surface again making sure that there is no streaks, finger prints, or imperfections, because paint will not hide these imperfections.
- DO NOT sand or scruff the inside of the shield before painting. The solvents in the paint will adhere to the plastic.

Painting the Shield

DO NOT USE ACRYLIC LACQUER. The harsh solvents will cause crazing (hair-line cracks in the shield).

Use only the following paints:

Epoxy Based Paints

- Imron PC by Dupont
- Ureblo by Martin Senour
- Senour -Startthane by PPG
- Mirathane by R-M

Urethane Based Paints

- Chromabase by Dupont
- TEC/Base by Martin Senour
- Deltron by PPG
- Solo by R-M

Acrylic Enamel Based Paints

- Centari by Dupont
- Acrylic Enamel by Martin
- Delstar by PPG
- Miracryl 11 by R-M

Note: Light coats and dry times are a must to prevent crazing.

- 1) Mix Paint
- 2) Spray 1 light dry coat and let dry 10 minutes
- 3) Spray 1 light dry coat and let dry 10 minutes
- 4) Spray 1 wet coat and let dry 10 minutes
- 5) Spray 1 wet coat and let dry 10 minutes
- 6) Apply 1 final wet coat

Note: Some metallic paints will appear to be translucent. If the color is translucent you will need to apply a coat of non-metallic paint of similar color after the metallic paint. Then cover the layer of non-metallic paint with a layer of the metallic paint to give it a finished look.

- 7) Apply clear coat if needed

Lund will not cover, supplies or time incurred when modifying their product.